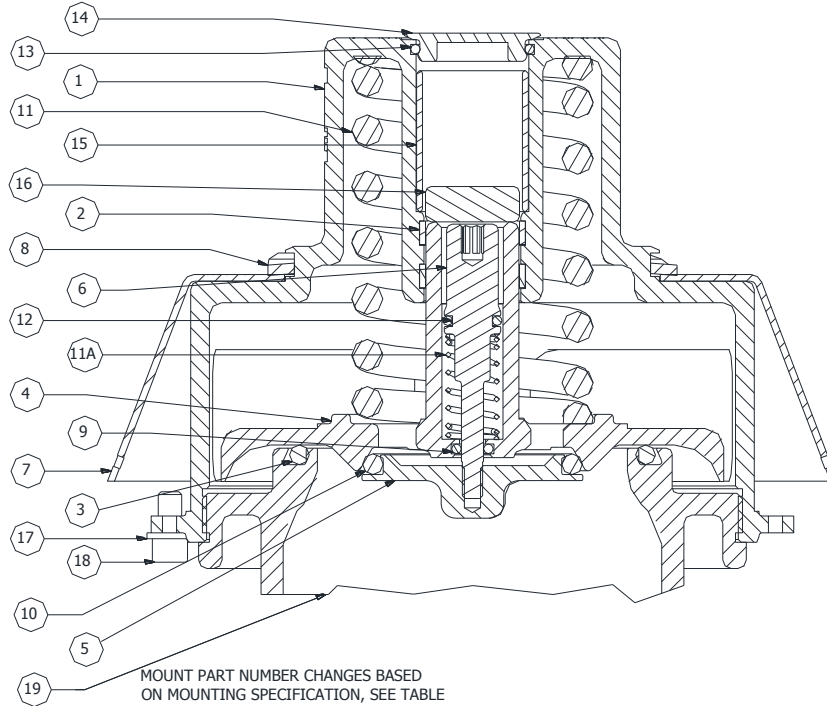


GUARDIAN™ RVC 407/412 COMBINATION VENT

PARTS LIST



No.	Req'd	Description	Material	Part Number
1	1	Body	316SS	28795SS
2	2	Wear Ring	Grap/PTFE	75639TR3.15
3	1	Seat O-Ring	Tef-sil	75553TS
4	1	Disc	316SS	28831SS
5	1	O-Ring Holder	316SS	28799SS
6	1	Vacuum Stem	PTFE/SS	75823SS
7	1	Shroud	316SS	28832SS
8	1	Wave Ring	Stainless	9Q5059
9	1	O-Ring	PTFE	19505TF
10	1	Seat O-Ring	Tef/sil	75811TS
11	1	Spring	PTFE/SS	75809SSTF-**
11a	1	Spring	316SS	75810SS
12	1	O-Ring	PTFE	18141TF
13	1	O-Ring	FKM GFLTs	3357VF
14	1	Cap	316SS	75818SS
15	1	Mag. Sleeve	Fiberglass	75824FG
16	1	Magnet	Coat. REM	9Z6209
17	1	Lock Washer	Stainless	9Q5844
18	1	Cap Screw	Stainless	9Q5993
19	1	Mount	316SS	*Varies*
20	1	Vac. Spring	PTFE/SS	75810SS

Included in SK-RVCT Seal Kit

Assembly Number	Mount Style	Mount Part Number
RVC3N*-**	3" NPS	28793SS
RVC3A*-**	3" ANSI FLG	28877SS
RVC3S*-**	3" NPS SWIVEL	28887SS
RVC3W*-**	3" WELD STUB	28872SS
RVC4N*-**	4" NPS	28791SS
RVC4A*-**	4" ANSI FLG	28868SS
RVC4S*-**	4" NPS SWIVEL	28888SS
RVC4F*-**	4" TTMA FLG	28874SS
RVC4W*-**	4" WELD STUB	28870SS

Assembly Number	Mount Gasket
RVC3N*-**	75800TF-3
RVC3S*-**	75800TF-3
RVC4N*-**	75800TF-4
RVC4S*-**	75800TF-4
RVC4F*-**	RGA401TD

*' Suffix indicates designated seal material extension.

**' Suffix indicates extension for correct spring corresponding to valve's indicated MAWP rating.



Designed, engineered and manufactured in the USA.



July 2015